

2 i n 0 n e



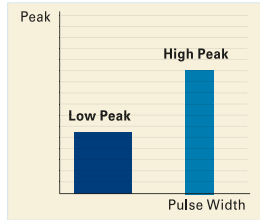
*SmoothCool*<sup>™</sup>  
**HYBRID**

*Advanced combination of  
hair removal and skin rejuvenation.*



# HR

## Unrivaled Hair Removal System



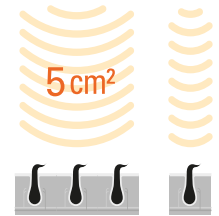
### Permanent hair removal for light colored and thin hair

- Opportunity to remove female upper lips hair permanently, which has been known as the most difficult area

High Peak Power SmoothCool

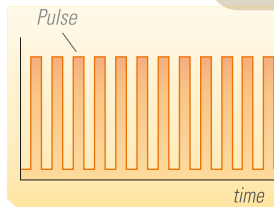
### Additional revenue opportunities

- Faster treatment using a big size filter (5cm<sup>2</sup>)
- Easy and comfortable treatment by various sized filters
- Less operating costs by simple filter change and treatment standardization



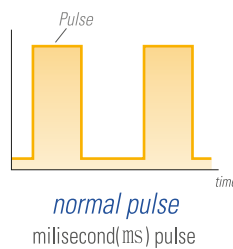
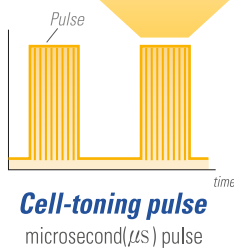
# SmoothCool™ HYBRID

# SR



Maximum 200 pulses of constant energy in  $\mu$ S (microsecond)

### Cell-toning pulse duration

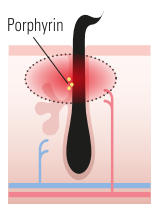
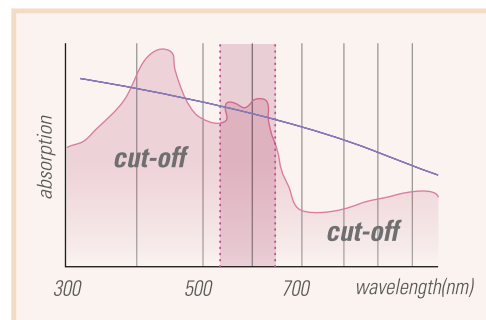


## Cell-toning Technology

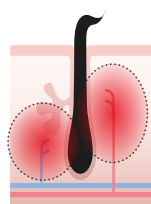
Cell-toning technology uses pulse duration in  $\mu$ S (microsecond) to approach pigment lesions safely such as melasma and PIH. The repeated micro lights in cell-toning pulse target rather melanin than other surrounding areas that increase temperature of melanin and destroy it. To treat the pigment lesions such as melasma, Cell-toning provides faster, safer and more effective efficacy.

### Specialized Dual filters

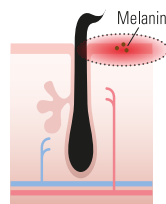
- 8 interchangeable cut-off and dual filters for customizing treatment by lesion and skin type
- Dual filtering from 420(S)nm (420~600nm), 530(S)nm (530~600nm) maximizes the treatment of acne and vascular while minimizing the adverse effect since the absorption rate of oxyhemoglobin is high but the absorption rate of melanin is low – These dual filters only pass through specific wavelength and cut off the other wavelength



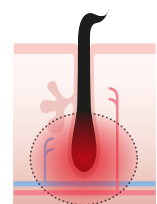
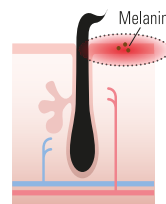
Acne



Vascular



Pigment



Hair Removal